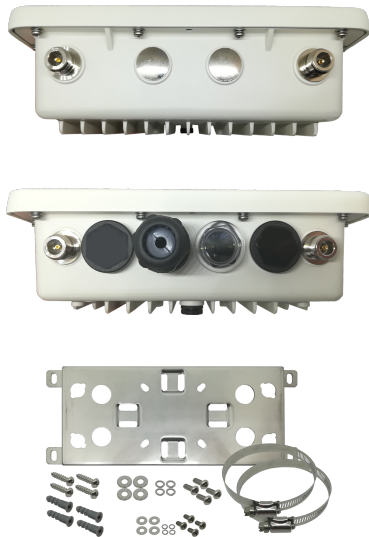




## ResIOT-X4 LoRaWAN™ Base station

ResIOT presents the latest generation of LoRaWAN™ Gateway. It is ideal for demanding markets: Smart Grid, Energy, Telecom and Broadcasting. This flexible solution provides durable, low-power, widearea connectivity in support of M2M and IoT applications. It is suitable for outdoor installation. The ResIOT-X4 gateway supports a range of industrial temperatures:  $-40^{\circ}$  /  $+85^{\circ}$





ResIOT-X4 Specifications	
Processor & Memory	ARM Cortex-A7 Processor 528/629MHz RAM DDR3 512MB, 4GB eMMC Flash, Cache 32 KB-I, 32 KB-D, 128 KB L2
Radio LoRa	Chipset Semtech SX1301** + 2*SX1257 RF end-front, 8 Multi-SF LoRa Channels, Listen before talk Able to receive up to 8 LoRa® modulated packets simultaneously Protocol 1.02, 1.03, 1.1. Class A,B,C (B only with Gps/Gnss version) Max TX Power +27 dBm, Receiving Sensitivity -142.5dBm Available frequencies: 868 MHz and 915 MHz ISM bands **From the last quarter of 2021 Semtech SX1303, new generation of LoRa® baseband processor with Fine Timestamp capability that enables Time Difference of Arrival (TDOA) network-based geolocation
Power Supply/Consumption	PoE-Power over ethernet Input 42~60 VDC IEEE 802.3at, or direct supply 12 VDC (for Direct power supply or via Solar Panels) (optional) Max 5W
Working Temp.	-40°C~85°C. Operating Humidity 10%~90%, non-condensing

ResIOT-X4 Datasheet v.1.6 - 15-06-2020



ResIOT  
Ripa di Porta Ticinese, 39 - 20143 - Milano  
Web site: [www.resiot.io](http://www.resiot.io)



Gps/GNSS	GNSS: BeiDou, Galileo, GLONASS, GPS / QZSS Number of concurrent GNSS: 3
Modem	EMEA EDGE GSM/GPRS, 3G, 4G Regulatory: GCF/ CE/ KC / NCC/ RCM / NBTC / FAC / ICASA
WiFi	Optional 802.11bgn (optional)
Connectors	Ethernet 1 RJ-45 10/100 (PoE) LoRa 1xNTYPE 1xLTE Antennas IP67 Optional Gps/GNSS 1xNTYPE Optional 1xWiFi Antennas IP67 Optional 6 Pin connectors for optional 12VDC power supply and RS485,RS232/CAN-bus
Connected External Devices	Optional RS485,RS232 and CAN-bus
OS	Linux 4.1.15 (Yocto)
Software	SSH, OpenVPN Three modes of use: 1) LoRaWAN Gateway with ResIoT Merlin Base Station Client (for simple or carrier-grade networks with full remote control and secure connection with ResIoT GW Remote Access Server)





	2) LoRaWAN Gateway with Semtech Packet Forwarder 3) Industrial IoT Box. On-premises ResIoT LoRaWAN Network Server and ResIoT IoT Platform all in a box with free unlimited license
Size / Dimension	258mm x 228mm x Height 90mm
Weight	2.65 Kg
Material, Chassis Type	IP67 Aluminum





## ResIoT-X4 BASE STATION ORDERING INFORMATION

Model	Frequency Support	Description	Radio Channels	GPS GLONASS	GPS/GLO NASS Antenna	Mode m 2G/3G /LTE	LoRa Antenna	2G/3G/L TE Antenna	LoRaWAN Class Device support	Pre-installed Software
ResIoT-X4-LTE-1-868-00	863..870 MHz	ResIoT X4 Base station 8 channels 868Mhz, Ethernet,LTE/4G/3G/2G Modem , PoE Included: 1xPole and Wall mount bracket, 1xLoRa Antenna omni 868Mhz IP67 465x27mm 3.8 dBi, 1xLTE Antenna IP67	8	N	N	YES	1 x IP67 3 dBi Length 465mm	1 x IP67	A, C	ResIoT Merlin IoT Box/Base Station Client, ResIoT LoRaWAN Network Server + IoT Platform with free license unlimited devices SSH Access, Custom configurable for other network servers
ResIoT-X4-LTE-1-868-G0	863..870 MHz	ResIoT X4 Base station 8 channels 868Mhz, GNSS, Ethernet,LTE/4G/3G/2G Modem , PoE Included: 1xPole and Wall mount bracket, 1xLoRa Antenna omni 868Mhz IP67 465x27mm 3.8 dBi, 1xGPS/GLONASS Antenna IP67, 1xLTE Antenna IP67	8	YES	1 x IP67	YES	1 x IP67 3 dBi Length 465mm	1 x IP67	A, B, C	ResIoT Merlin IoT Box/Base Station Client, ResIoT LoRaWAN Network Server + IoT Platform with free license unlimited devices SSH Access, Custom configurable for other network servers network servers

ResIoT-X4 Datasheet v.1.6 - 15-06-2020



ResIoT  
Ripa di Porta Ticinese, 39 - 20143 - Milano  
Web site: [www.resiot.io](http://www.resiot.io)

