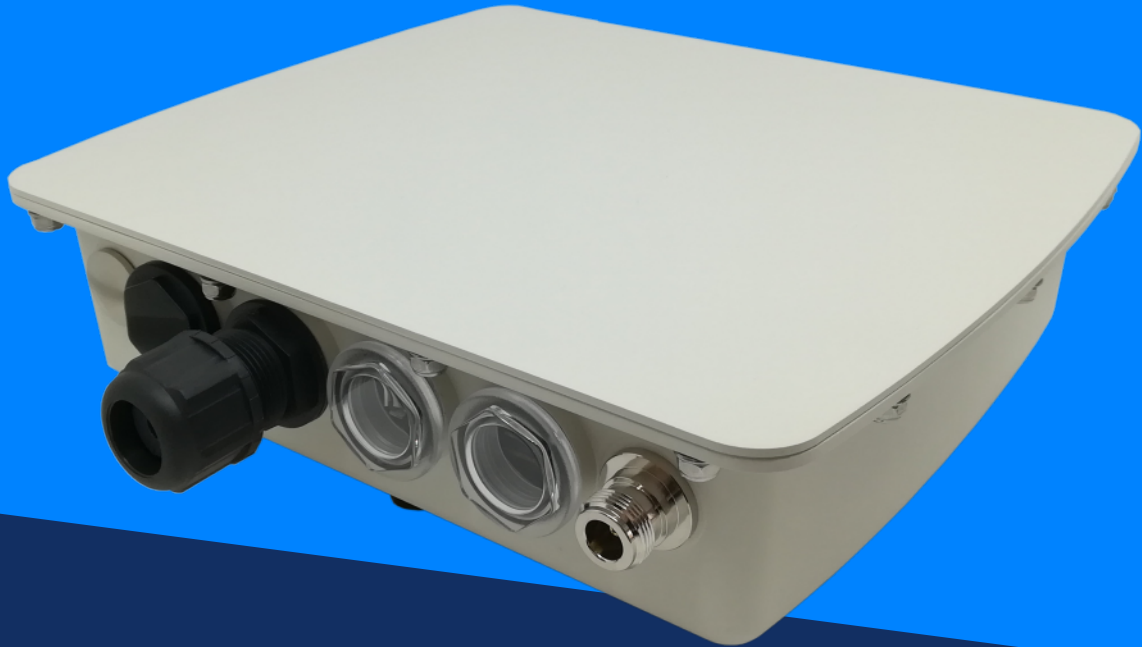




# ResIoT® X4 868MHz

Outdoor IP67 Base Station LoRaWAN® Gateway



Cortex-A7  
629MHz



RAM  
512Mb



4Gb  
eMMC



PoE 42-60V  
or 12-24V<sup>1</sup>



Data  
Retention<sup>2</sup>



RS-485<sup>3</sup>



ChipSIM  
MFF2<sup>4</sup>



MicroSIM  
3FF Slot<sup>4</sup>



-40 to +85 °C  
10%-95% H



Modem 2G  
3G/4G LTE<sup>5</sup>



GPS  
GNSS<sup>6</sup>



Semtech  
SX1301<sup>7</sup>

ABC

LoRaWAN®  
class support<sup>8</sup>



Embedded  
sensors<sup>9</sup>



Linux Yocto  
4.1.15<sup>10</sup>



Wifi<sup>11</sup>



Waterproof  
case



LoRa Net Srv  
& IoT Platform<sup>9</sup>

ResIoT® X4 is the latest **LoRaWAN® Gateway/Base station Business-grade model**. It is specifically designed for outdoor application thanks to its **modern-designed IP67 aluminium case** and **waterproof** components & connectors. This gateway works in a range of industrial temperatures, from -40 °C to + 85 °C. That's makes our device suitable for every environmental conditions and this is the main reason of its wide market success. ResIoT® X4 provides durable, low-power, widearea connectivity in support of M2M and IoT applications. It is perfect for demanding markets like **Smart Grid, Energy, Telecom and Broadcasting**.

<sup>0</sup> Four modes of use: **1** LoRaWAN® Gateway with ResIoT® Merlin Base Station Client (for simple or carrier-grade networks with full remote control and secure connection with ResIoT® GW Remote Access Server) **2** LoRaWAN® Gateway with Semtech™ Packet Forwarder **3** Industrial IoT Box. On-premises ResIoT® LoRaWAN® Network Server and ResIoT® IoT Platform all in a box with free unlimited license **4** Hybrid Mode 1+3 LoRaWAN® Gateway with ResIoT® Merlin Base Station Client & Industrial IoT Box

<sup>1</sup> It can be powered with PoE or DC12-24 Volt, or both at the same time for Uninterruptible Power Supply

<sup>2</sup> In case of loss of network connection between gateway and network server the arrived radio messages are not lost, they are saved in memory and forwarded to the network server when the connection is restored

<sup>3</sup> Example: Modbus RTU RS-485 connection to external devices or solar panel control system. Optional: RS-232, CAN-bus

<sup>4</sup> Chip SIM MFF2 included and ready to activate (worldwide connectivity! Visit [sim.resiot.io](http://sim.resiot.io)). MicroSIM 3FF slot available. You can use your own SIM Card (ChipSIM will be automatically deactivated)

<sup>5</sup> 2G/3G/4G LTE Modem Quectel EG91x

<sup>6</sup> GPS module ublox MAX-M8Q (concurrent reception of up to 3 GNSS)

<sup>7</sup> Semtech SX1301, FPGA, Listen Before Talk, Spectral Scan (from the last quarter of 2021 Semtech SX1303, new generation of LoRa® baseband processor with Fine Timestamp capability that enables Time Difference of Arrival (TDOA) network-based geolocation)

<sup>8</sup> Support for class A, B, C (B only with GPS/GNSS version)

<sup>9</sup> Embedded Accelerometer, Shock, Inclination, Temperature & Humidity Sensors

<sup>10</sup> KIT Toolchain available for software developer

<sup>11</sup> Wifi Optional