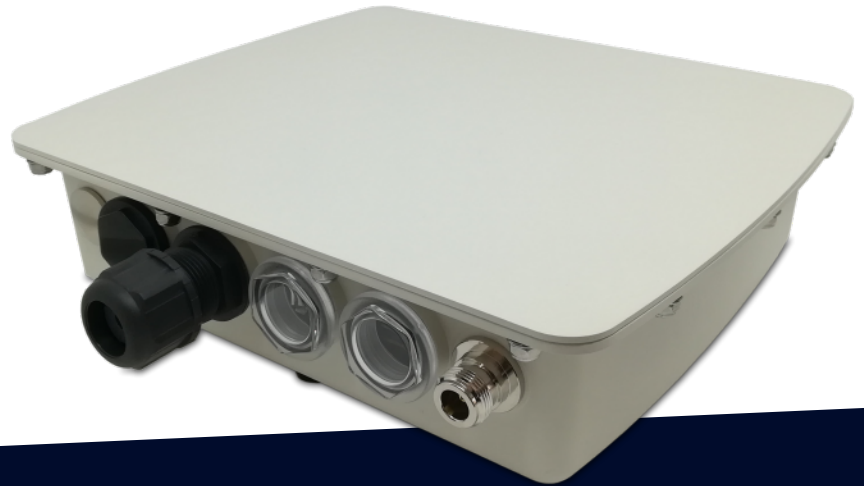


ResIoT® X4 is the latest **LoRaWAN® Gateway/Base station Business-grade model**. It is specifically designed for outdoor application thanks to its **modern-designed IP67 aluminium case** and **waterproof** components & connectors.

This gateway works in a range of industrial temperatures, from -40 °C to + 85 °C. That's makes our device suitable for every environmental conditions and this is the main reason of its wide market success.

ResIoT® X4 provides durable, low-power, widearea connectivity in support of M2M and IoT applications. It is perfect for demanding markets like **Smart Grid, Energy, Telecom and Broadcasting**.



Cortex-A7
629MHz



RAM
512Mb



4Gb
eMMC



PoE 42-60V
or 12-24V



RS-485



ChipSIM
MFF2



MicroSIM
3FF Slot



Waterproof
case



-40 to +85 °C
10%-95% H



Modem 2G
3G/4G LTE



GPS
GNSS



Semtech
SX1303



LoRaWAN®
class support



Wifi



Embedded
sensors



Linux Yocto
4.1.15



Data
Retention



LoRa Net Srv
& IoT Platform

ResIoT® Software	Four modes of use: 1) LoRaWAN® Gateway with ResIoT® Merlin Base Station Client (for business or carrier-grade networks with full remote control and secure connection with ResIoT® GW Remote Access Server) 2) LoRaWAN® Gateway with Semtech™ Packet Forwarder 3) Industrial IoT Box. On-premises ResIoT® LoRaWAN® Net Srv and ResIoT® IoT Platform all in a box with free unlimited license 4) Hybrid Mode 1+3 LoRaWAN® Gateway with ResIoT® Merlin Base Station Client & Industrial IoT Box SSH, OpenVPN available
Data Retention	In case of connection lost between gateway and network server the arrived radio messages are not lost, they are saved in memory and forwarded to the network server when the connection is restored
CPU & Memory	ARM Cortex-A7 528/629MHz, RAM DDR3 512MB, 4GB eMMC Flash, Cache 32 KB-L, 32 KB-D, 128 KB L2
Power Supply	PoE-Power over ethernet Input 42~60 VDC IEEE 802.3at, or 12-24 VDC (for Direct power supply or via Solar Panels). Max 5W
External Conn.	Optional RS485,RS232 and CAN-bus
Modem & SIM	Only for LTE version, Modem Quectel EG91x 4G, LTE, 3G, 2G, EMEA EDGE GSM/GPRS Regulatory: GCF/ CE/ KC / NCC/ RCM / NBTC / FAC / ICASA Chip SIM MFF2 included and ready to activate (worldwide connectivity! Visit sim.resiot.io). MicroSIM 3FF slot available. You can use your own SIM Card (ChipSIM will be automatically deactivated)
Radio Lora & GPS	Chipset Semtech SX1303 + 2x SX1250 RF end-front, 8 Multi-SF LoRa Channels, Listen before talk, Fine Timestamp capability for Time Difference of Arrival (TDOA & network-based geolocation), Able to receive up to 8 LoRa® modulated packets simultaneously. Protocol 1.02, 1.03, 1.1. Class A,B,C (B only for GPS version) Max TX Power +27 dBm, Receiving Sensitivity -142.5dBm Only for GPS version, module ublox MAX-M8Q (concurrent reception of up to 3 GNSS)
Connectors	Ethernet 1 RJ-45 10/100 (PoE) LoRa 1xNTYPE, 1xLTE Antennas IP67, Optional Gps/GNSS 1xNTYPE, Optional 1xWiFi Antenna IP67 Optional 6 Pin connectors for 12-24VDC power supply and RS485,RS232/CAN-bus
Wifi	Only for Wifi version, 802.11b/g/n
Sensors & OS	Embedded Accelerometer, Shock, Inclination, Temperature & Humidity Sensors. Linux 4.1.15 (Yocto)
Working Param.	-40°C~85°C. Operating Humidity 10%~90%, non-condensing
Case & Size	IP67 Aluminum Case, 258mm x 228mm x 90mm, about 2.65 Kg

Ordering Information

- ResIoT® X4 is configured and delivered with pre-installed Software
- ResIoT® Merlin IoT Box/Base Station Client
 - ResIoT® LoRaWAN® Network Server
 - IoT Platform with free license unlimited devices
 - SSH Access & custom configuration available for other network servers

This gateway supports complete remote management, all the configuration settings can be done centrally by the ResIoT® Infrastructure Server.

Available Models

Model	Freq.	Description	Radio Ch.	GPS GLONASS	Modem 2G/3G/4G/LTE	LoRa Antenna	LoRaWAN® Classes
ResIoT-X4-ETH-1-868-00	863..870 MHz	ResIoT® X4 LoRaWAN® Gateway 8 channels 868Mhz Ethernet, PoE .at, RS485 Included: 1xPole and Wall mount bracket 1x LoRa Antenna omni 868Mhz IP67 465x27mm 3.8 dBi	8	N	N	1x IP67 3.8 dBi Length 465mm	A, C
ResIoT-X4-ETH-1-915-00	902..928 MHz	ResIoT® X4 LoRaWAN® Gateway 8 channels 868Mhz Ethernet, PoE .at, RS485 Included: 1xPole and Wall mount bracket 1x LoRa Antenna omni 868Mhz IP67 465x27mm 3.8 dBi	8	N	N	1x IP67 3.8 dBi Length 465mm	A, C
ResIoT-X4-ETH-1-868-0W	863..870 MHz	ResIoT® X4 LoRaWAN® Gateway 8 channels 868Mhz Ethernet, PoE .at, RS485, WiFi 2,4Ghz 802.11b/g/n Included: 1xPole and Wall mount bracket 1xLoRa Antenna omni 868Mhz IP67 465x27mm 3.8 dBi 1xWiFi Antenna 2,4Ghz Outdoor IP67	8	N	N	1x IP67 3.8 dBi Length 465mm	A, C
ResIoT-X4-LTE-1-868-00	863..870 MHz	ResIoT® X4 LoRaWAN® Gateway 8 channels 868Mhz Ethernet, LTE/4G/3G/2G Modem , PoE .at, RS485, Chip SIM, slot Micro SIM 3FF Included: 1xPole and Wall mount bracket 1xLoRa Antenna omni 868Mhz IP67 465x27mm 3.8 dBi 1xLTE Antenna IP67	8	N	YES Antenna 1x IP67	1x IP67 3.8 dBi Length 465mm	A, C
ResIoT-X4-LTE-1-868-G0	863..870 MHz	ResIoT® X4 LoRaWAN® Gateway 8 channels 868Mhz Ethernet, LTE/4G/3G/2G Modem, PoE .at, RS485, GNSS, Chip SIM, slot Micro SIM 3FF Included: 1xPole and Wall mount bracket 1xLoRa Antenna omni 868Mhz IP67 465x27mm 3.8 dBi 1xLTE Antenna IP67, 1xGPS/GLONASS Antenna IP67	8	YES Antenna 1 x IP67	YES Antenna 1x IP67	1x IP67 3.8 dBi Length 465mm	A, B, C